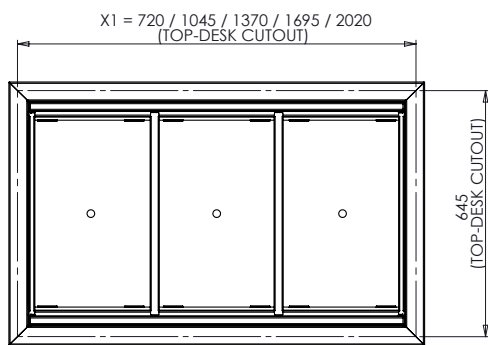
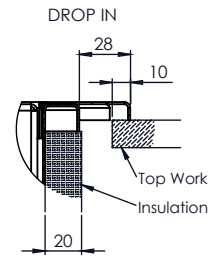
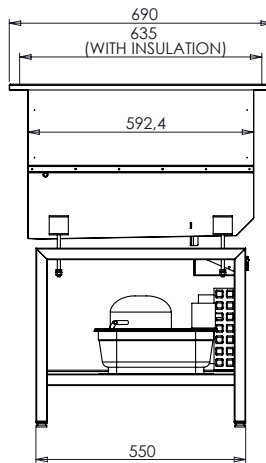
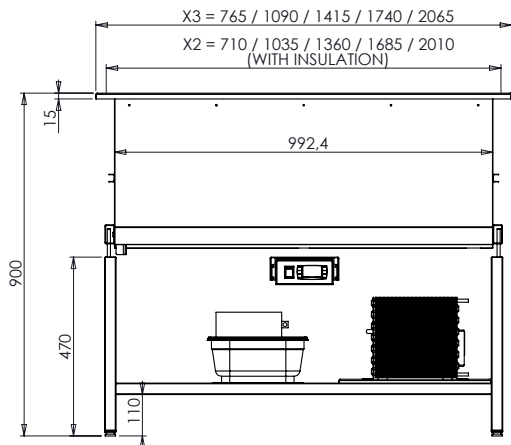


# GN Cooling tub - ventilated

Technical drawing



GN2 = X1=720; X2=710; X3=765;  
 GN3 = X1=1045; X2=1035; X3=1090;  
 GN4 = X1=1370; X2=1360; X3=1415;  
 GN5 = X1=1695; X2=1685; X3=1740;  
 GN6 = X1=2020; X2=2010; X3=2065;

Illustrative pictures



## SPECIFICATION LIST

	SELF CONTAINED	GN2	GN3	GN4	GN5	GN6
Catalog number						
<b>Outside dimension:</b>						
Width (x) [mm]		765	1090	1415	1740	2065
Depth (y) [mm]		690	690	690	690	690
Height (z) [mm]		900	900	900	900	900
Temperature (range)				3 - 8°C		
Cooling medium		R290	R290	R290	R290	R290
Refr. capacity (evap. @ -10°C)		0,48kW	0,64kW	0,9kW	1,1kW	1,2kW
Voltage				1, N, PE ~ 230V, 50Hz		
Power input		0,45kW	0,6kW	0,75kW	0,9kW	1,1kW
Material				Stainless Steel 1.4301		
SPL (distance 1m)				35 - 50 dB(A)		