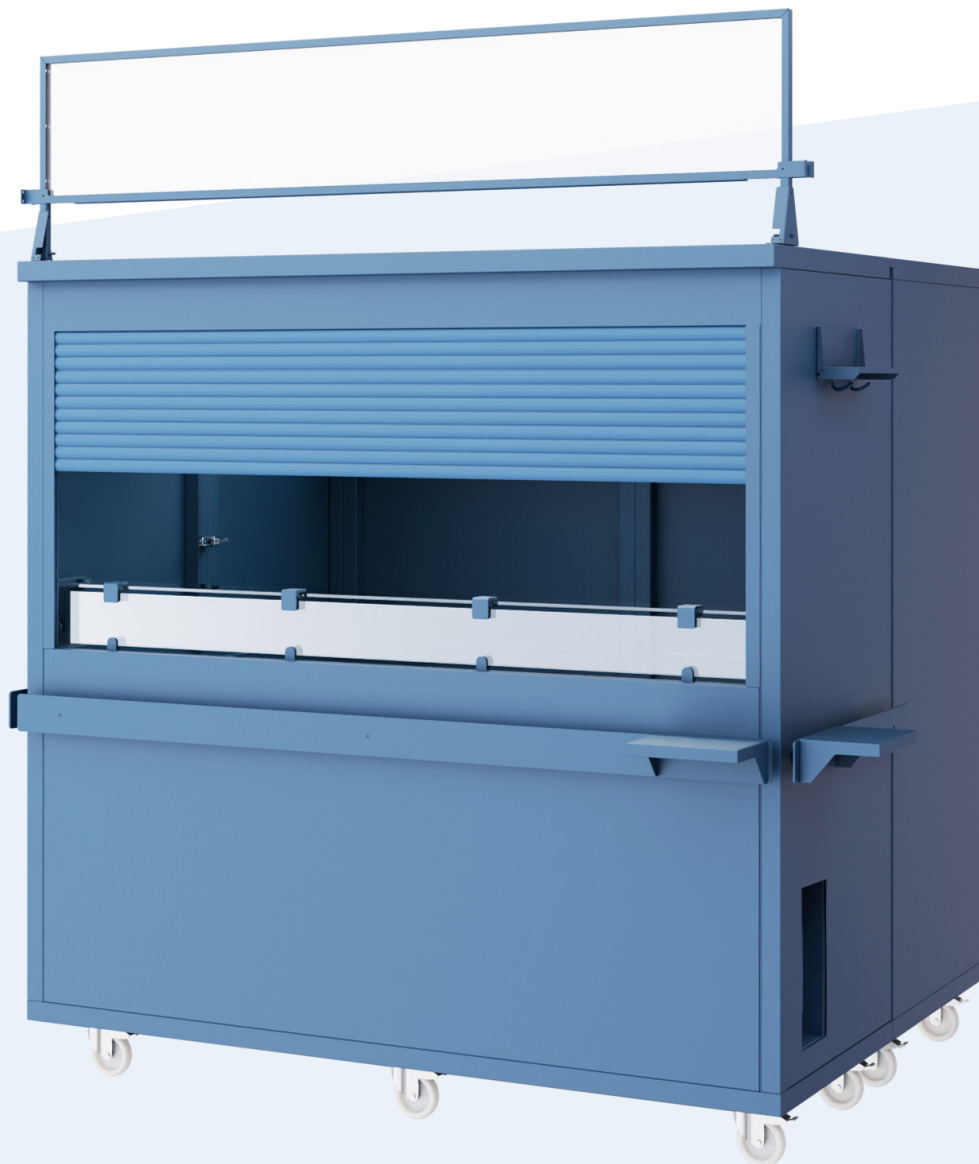
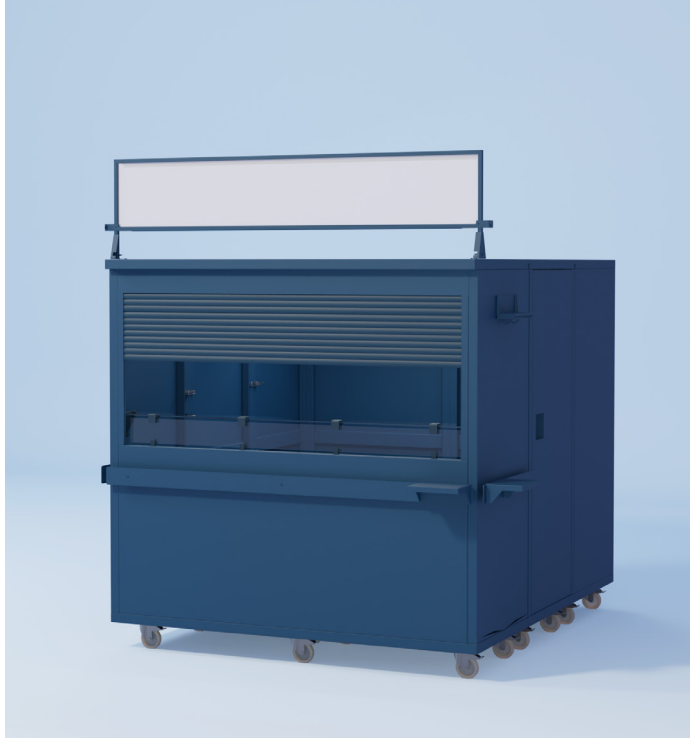


the
Cube



**CRAFT YOUR
CULINARY STAND**



CHOOSE YOUR FAVOURITE COLOR

Choose your colors and materials (wood cladding) so that your stand looks exactly the way you want. One of the other options is decals. We can provide any color from the **RAL palette** at www.ralcolor.com. Upon request, we can also use colors from the **NCS** or **Pantone** palette.



YOU CAN CHOOSE ANY OF OUR PRODUCTS FOR YOUR UNIQUE CULINARY STAND

for example:



CRAFT YOUR CULINARY STAND

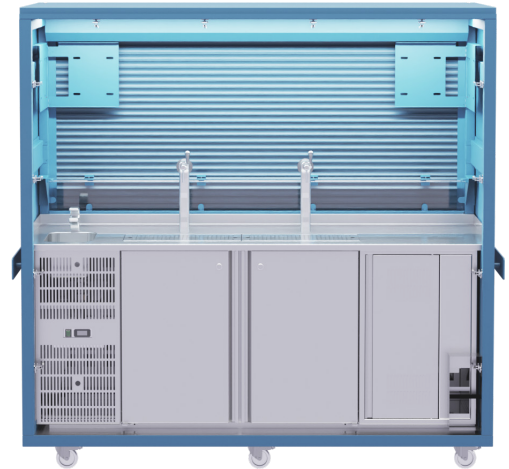
Create your own mobile culinary stand exactly according to your ideas and needs. Our flexible solution allows you to customize the stand for various purposes, from a cocktail bar or beer tap to grilling burgers or making pizza. With our mobile stand, you'll be ready for any

large event or a garden party at home. You can choose between different variations and sizes. Placement of doors for the multi-part type according to your preferences: sliding doors at the back or wing door on the side.

THE INTERNAL ARRANGEMENT DEPENDS ON YOUR CHOICE

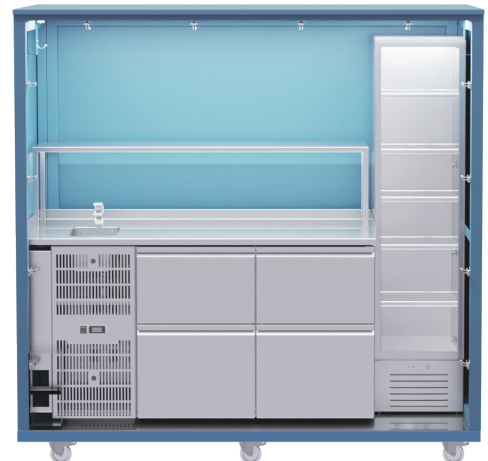
Type: STANDARD - Front Module

Here, you can integrate a cooling table for barrels, as well as a neutral cabinet for various devices. The countertop includes an integrated sink with a faucet, a beer tap with a drip tray, and a glass panel on the front. In the lower right corner, there are openings for cables and pipes.



Type: STANDARD - Back Module

This example features a stainless steel construction with an integrated sink and faucet in the countertop, as well as a cooling table with drawers for beverages. On one side, there is additional space for a showcase where more products can be placed. In the lower left corner, there are cutouts for cables and pipes.



Type: MAXI - Back Module

In this Maxi version, you can create a complete working environment with everything you need. In addition to a neutral cabinet with a countertop, integrated sink, faucet, and a stainless steel structure, there is a lowered cooling table with drawers. On top of this, two grills are placed, with an exhaust hood installed above them. In the lower left corner, there is space for cables and pipes.

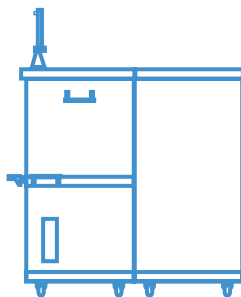


CHOOSE YOUR IDEAL TYPE



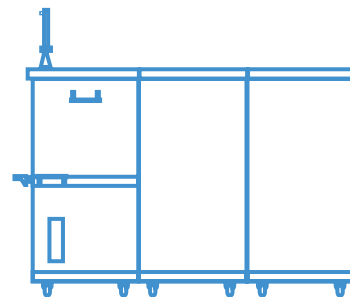
Cube¹

A one-part stand is equipped with a roller shutter on both sides. It doesn't need to have shelves and holders on the outside. Everything will be inside. The stand is suitable for an outdoor garden due to its smaller dimensions.



Cube²

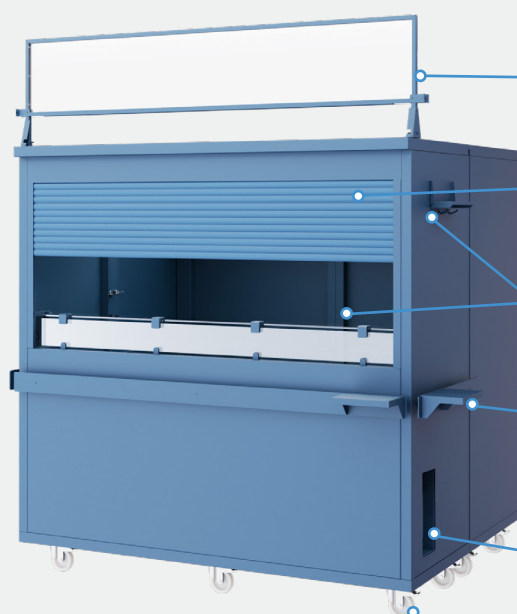
The two-part stand can be easily separated and joined. One side has sliding doors, and the other side features a roller shutter. This stand is ideal for restaurant patios, cafes, and smaller events.



Cube³

The three-part stand can be easily separated and joined. One side has sliding doors, and the other side features a roller shutter. It is best suited for large events, offering complete facilities and abundant space.

WHAT DOES THE STAND HAVE?



Illuminated Banner
(Space for advertising or name)

Roller shutter
(Prevents most debris from entering)

Interior Arrangement
(Customize the interior layout to your liking)

Hangers and Shelves
(Shelf and hooks placement selectable around the front module)

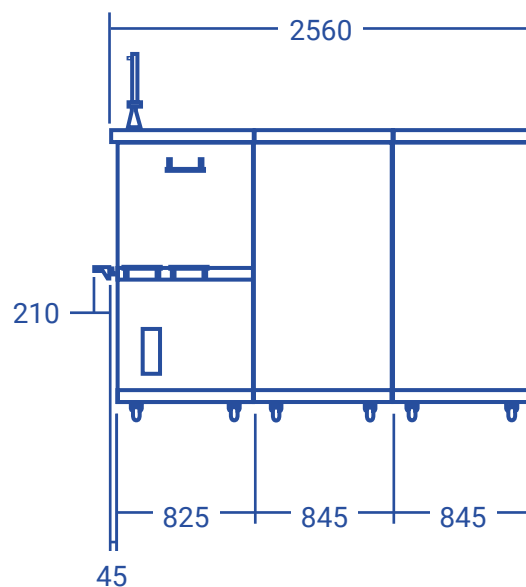
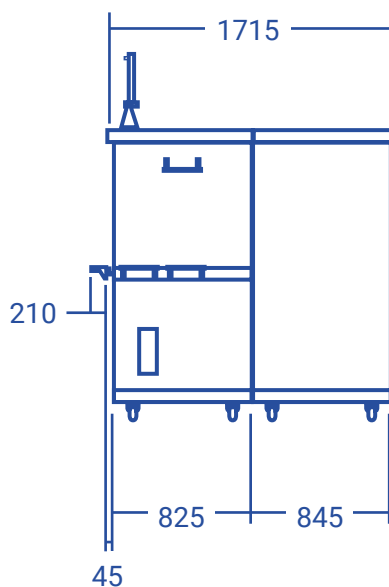
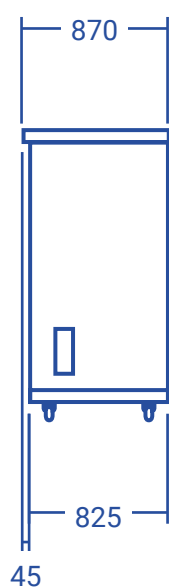
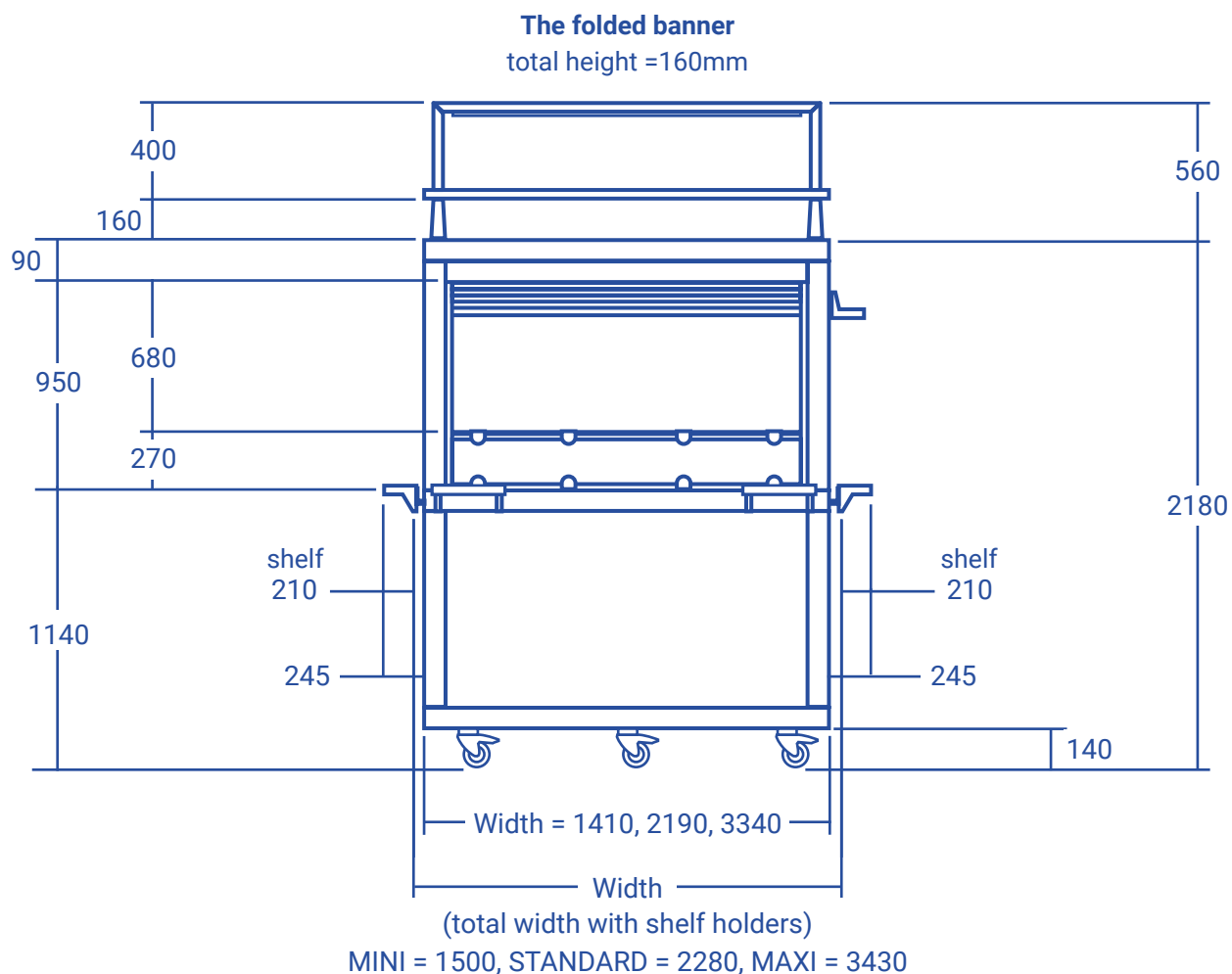
Power adapter outside and internal box
with 4x 230V, 1x 400V, 1x network socket
(from both sides of the front module).

Wheels
(For easy and convenient maneuverability).

DIMENSIONS

The overall dimensions include the shelf brackets, which are only around the perimeter of the front module of the stand (the shelves add

210mm per side where they are installed). The size of the wheels depends on the total load. You can choose a variant without them.



HOW TO ORDER THEM CORRECTLY?



Front module

V1-070700-0020	MINI Front module for 1-part	5.966,-
V1-070700-0021	MINI Front module for 2- & 3-part	5.133,-
V1-070700-0040	STANDARD Front module for 1-part	7.248,-
V1-070700-0041	STANDARD Front module for 2- & 3-part	6.415,-
V1-070700-0060	MAXI Front module for 1-part	8.697,-
V1-070700-0061	MAXI Front module for 2- & 3-part	7.698,-

Includes roller shutter (depending on stand type), shelf brackets with two shelves



Middle module

V1-070700-0022	MINI Middle module without doors	3.160,-
V1-070700-0023	MINI Middle module with wing door	3.415,-
V1-070700-0042	STANDARD Middle module without doors	4.015,-
V1-070700-0043	STANDARD Middle module with wing door	4.265,-
V1-070700-0062	MAXI Middle module without doors	4.818,-
V1-070700-0063	MAXI Middle module with wing door	5.115,-



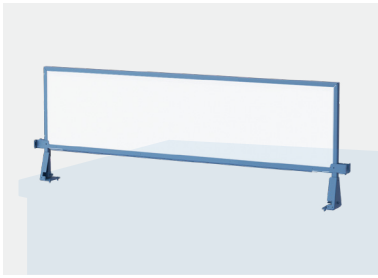
Back module

V1-070700-0024	MINI Back module without door	4.080,-
V1-070700-0025	MINI Back module with wing door	4.346,-
V1-070700-0044	STANDARD Back module without door	5.100,-
V1-070700-0045	STANDARD Back module with wing door	5.433,-
V1-070700-0046	STANDARD Back module with sliding door	5.433,-
V1-070700-0064	MAXI Back module without door	6.120,-
V1-070700-0065	MAXI Back module with wing door	6.520,-
V1-070700-0066	MAXI Back module with sliding door	6.520,-

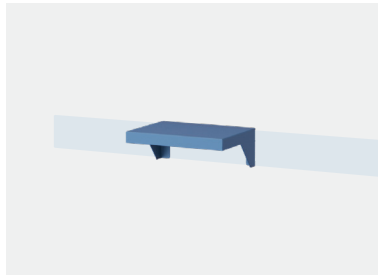
The standard product does not include wheels or a galvanized base, this must be selected as an accessory.

ACCESSORIES

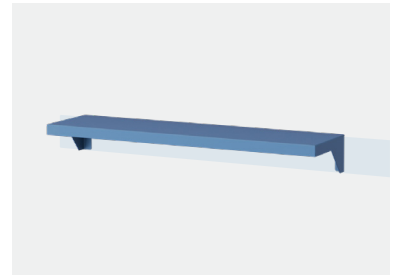
The color of the accessories will be determined according to your wishes.



Banner with LED light



Small Shelf (outdoor)



Big shelf (outdoor)



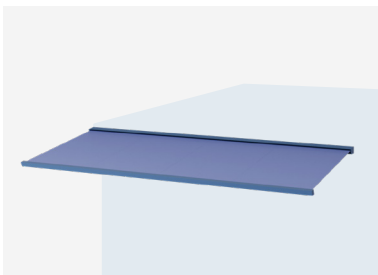
Hanger



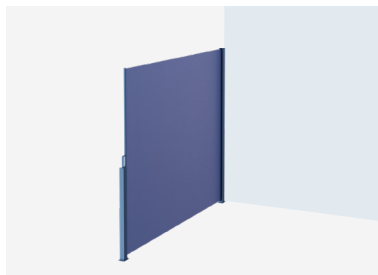
Shelf with hanger



Trash bin (wall-hanged)



Open awning



Side awning

Additional accessories will be added, but for example,
you can also choose from different types of wheels or a galvanized base.

Cube¹_garden

This one-part stand with roller shutters, built-in grill, heating plates, sink, shelves, bar cooling, and plenty of storage space is ideal for a barbecue evening with friends.



Cube²_coffee

The two-part stand with wooden cladding, removable shelves on the outside, and built-in sink. It offers plenty of storage space. Perfect for starting your new business idea.



Cube³_cocktails

Our three-part stand provides space for a complete bar with countertop areas and shelves. Here, you can prepare and serve the perfect drinks.





GASTRO PRODUCTION S.R.O.

ZEMĚDĚLSKÁ 500, KAMENNÝ ÚJEZD,
373 81, CZECH REPUBLIC